

# M GLOBAL BAR V6

## SIMPLE / FUNCTIONAL / SAFE / DURABLE

The version 6 of a great bar with a great history of performance and reliability. We have taken out any unnecessary items instead of adding them, to make every component more functional. Simply put : "you cannot break what does not exist". A bar is your cockpit in the water, not on the road or inside an airplane. Everything must be there at your fingertips and must work instantly when you really need it. No marketing gimmicks, No 3D videos to impress you behind the screen of a computer. A simple bar that works. Everyday. For long time.

Item No. 14GBV6

Hand sanded soft grip ( not moulded) with coloured diecut graphic patterns. Best grip when wet and longest lifetime.

Polished Aluminum cast center hole with oversized oval edges to allow perfect depower tube sliding in any position of the bar at any angle.

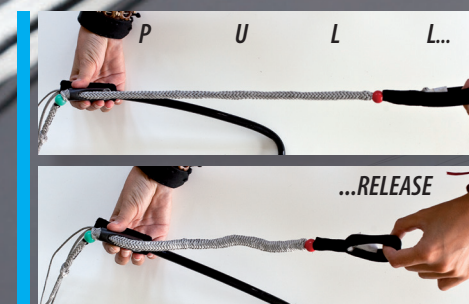
Double chamber hollow tube for de-power rope and safety line. Made in Italy with hi quality Polyurethane. No need to change your de-power rope or safety line.

Oversized color coded side floaters guarantee the floatation of the bar.

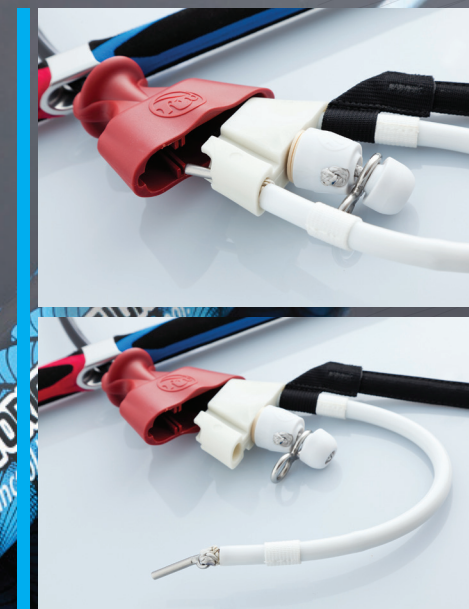
Adjustment knots to reduce or increase bar width of 4 cms on each side.



The new Rotoring head, allows an easy safety leash side attachment and untwisting movement of the front lines at the same time.



8mms De-Power Spectra rope with internal elastic bungee that reduces the excess of length of untensioned rope.



2 PARTS ONLY chicken loop safety release system. This guarantees that the opening system will always work in any temperature and weather condition. The mechanism is so simple and functional that cannot be altered by sand or small stone debris. NO steel mechanical complicated parts that could possibly have problems of alteration due to rust or corrosion and therefore prejudging the functionality over the lifetime of the bar.

Red and Blue color coded side caps with moulded rubber to prevent breakage or accidental tearing of fabrics when putting the bar inside the kitebag.



New stainless steel pulley with 450 kgs of loading resistance, allows to minimize friction and wear of the de power rope trim.



The special Iglidur TM self-lubricating bearing washers allow an easy rotation of the Rotoring head plastic piece. The special composition of these bearing washers incorporates solid lubricants that will secure an ever lasting gliding effect even after years of use.

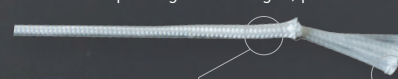
# RIGID THREAD

Made with Dyneema® fiber

Dyneema® is registered trade mark of royal DSM N.V. Unidirectional rigid thread specially made for:

0% Stretch of the front lines=never loose the kite trimm

The use of RIGID THREAD LINES™, an RRD exclusivity, creates and unbeatable package of strength, performance and safety.



100% SPECTRA Micro-woven protection shock.

100% UD SPECTRA Fibers covered by waxed resin.

- F ▶ Composite Glass/Carbon Bar with hand sanded soft grip. Diecut graphic colors that do not fade in the sun.
- ▶ Rubber covered side caps to improve side grip and avoid damage
- ▶ Bar width adjuster
- ▶ Double chamber hollow tube for de-power rope and safety line.
- ▶ Original Clamcleat™, not just another copy.
- ▶ 2 PARTS ONLY chicken loop safety release system. No rust and corrosion damage, EASY to re-assemble! Rotoring system with "Iglidur" washers to untwist lines.
- ▶ Safety leash ring attachment, convertible into HP suicide leash.
- ▶ Industry reference exclusive 23 mts RIGID THREAD LINES, never stretch. Never loose trim.