

GLOBAL BAR V8

Simple / Functional / Safe / Durable



• USER MANUAL

RRD





THANK YOU FOR PURCHASING A NEW RRD GLOBAL BAR V8.

Congratulations: you've just chosen to purchase a bar with all the latest features and special RRD design.

Before using this bar for the first time, please read the users manual carefully. This manual is intended to educate you about your new RRD bar and provide you with information for the correct set-up, tuning, maintenance and care of the bar and its components.

CONTENT

5	General informations
10	Global bar features
12	Wind conversion table
13	Global bar
14	New features on the global bar v7
15	Velcro loop to prevent de-power cord from "flapping" around. Adjusting the power of your kite with the clam cleat with open velcro loop
16	Adjusting the power of your kite with the clam cleat with closed velcro loop
17	How to lock the chicken loop into your harness hook
18	Release of power / Quick release safety system
20	Reassembling the chicken loop
21	Safety leash
22	Releasing the safety leash
23	Reassembling the safety leash
24	Un-twisting power lines
25	Correct way to store the global bar
26	Relaunching the kite
27	Tip: steps to check the flying lines alignment
28	Warranty
29	Warranty link
30	The RRD "Rigid thread lines"

EXEMPTION AND ACCEPTANCE

Assignment of responsibility, rejection of claims and awareness in acceptance of risks.

ASSEMBLING THIS PRODUCT YOU UNDERTAKE TO:

First of all to follow carefully terms and conditions set forth below, and second of all require anyone using this product to be bound by such terms. If you are unwilling to be bound by these terms, return this product (before use) for a full refund. A full refund will only be applied if this product has never been used.

ASSUMPTION OF RISK

Use of this product and any of its components involves certain inherent risks, dangers and hazards, which can result in serious personal injury and death. In using this product you freely agree to assume and accept any and all known and unknown risks of injury while using this equipment. The risks inherent in the sport can be greatly reduced by abiding by the Warnings and Guidelines listed in this User's Guide and by using common sense.

The use of this RRD Product and any of its components involves certain inherent risks, dangers, and hazards, ineluctable and unpredictable, which can result in serious personal injury and death to both the user and to non user third parties.

In using this RRD Product, you freely agree to assume and accept any and all known and unknown risks of injury to you and to third parties while using this equipment.

Kiteboarding is a dangerous sport and the use of kiteboarding equipment can result in serious personal injury and death to both the user and to non user third parties.

The risks inherent in this sport can be greatly reduced by abiding by the warning guidelines listed in this owner manual and by using common sense.

EXEMPTION AND ACCEPTANCE OF WAIVER OF CLAIMS

In consideration of the purchase of this RRD product, you hereby fully agree to the following derogation of the existing law:

- To waive any and all claims that you have or may in the future have against Ricci International Srl, or its agents and all related parties resulting from use of this Product and any of its components.
- Under no circumstances Ricci International Srl or/and any of its agents and all related parties can be responsible for any and all liability for any loss, damage, circumstantial, consequent, against the regulations or exemplary, or rather contractual, for injury or expense that you or any users of your RRD Product may suffer, or that your next of kind may suffer, as a result of the use of the RRD Product, due to any cause whatsoever, including negligence or breach of contract on the part of RRD and all related parties in the design or manufacture of the RRD Product and any of its components. In the event of your death or incapacity, all provisions contained herein shall be effective and binding upon your heirs, next of kind, executors, administrators, assigns, and representatives. RRD-related parties have not made and expressly deny any oral or written representations other than what is set forth herein and the RRD Product User's Manual.

RELEASE AND WAIVER OF CLAIMS

Purchasing and using this RRD product(s), you hereby fully agree to the following details:

- Explicit waiver of any and all claims that you have or could have in the future against Ricci International Srl, for any and all damages incurred as a result from use of this RRD Product and any of its components.
- Under no circumstances Ricci International Srl can be responsible for any and all liability for any loss, damage, injury or expense that you or any users of your RRD Product may suffer, as a result of the use of the RRD Product, and any of its related components. Due to any cause whatsoever, including negligence or breach of contract on the part of RRD and all related parties in the design or manufacture of the RRD Product and any of its components. In the event of your death or incapacity to understand and will, all provisions contained herein shall be effective.

READ THE FOLLOWING POINTS BEFORE ASSEMBLING YOUR NEW RRD BAR

Warnings:

- Kite flying can be dangerous.
- Always use extreme caution when using this product.
- Misuse of this product can cause serious injury or death.
- Only use this product if you are in good physical health.
- Never act in a careless manner when using this product (such as jumping in the air, or tying yourself down to objects or structures).

You are responsible for your own safety, and the safety of others around you when using this product.

WARNINGS AND SAFETY RULES

- Always wear a Coast Guard approved personal flotation device when using this product in or near the water.
- Always have a partner when launching and landing your kite.
- Always learn to use a small two-line stunt kite before attempting to use this product.
- Never allow anyone who is not familiar with traction kiting to use this product without experienced assistance.
- Never use this product without a leash system. A loose kite is extremely dangerous to everyone down wind.
- The leash system is not a permanent attachment to this product. Never permanently attach yourself to the kite or any of its components.
- Always wear a helmet, gloves, shoes, and protective eyewear when using this product.
- Always use a high quality, kite specific harness.
- Before using this product take lessons from a reputable school. Do not attempt to fly a kite without being trained by a kite instructor.
- Get yourself used to the way your Quick Release devices work by testing them often in a non emergency situation.

- After every session rinse these devices in fresh water: **1)** quick release; **2)** de-power trim loop; **3)** safety leash; **4)** leash system.

Quick Release devices have a limited lifetime, must be checked at the end of each session and changed as soon as first signals of wear and tear become evident, in order to always guarantee the best efficiency.

- The Quick Release, the Trim Loop and your leash equipped with a quick release must be changed after 250 hours of kiting. Change them before if you see any sign of wear. The wearing of your Quick Release devices is not considered a warranty issue.

CHOOSE SAFE WEATHER CONDITIONS

- Never learn to use this product in more than 10 knots of wind.
- Never use this product in high or gusty winds.
- Never use this product in thunderstorm and lightning conditions.
- Only use this product when you can remain in a standing position.
- Never use this product in wind conditions that are beyond your ability level.
- Never use this product near or on the water in offshore wind conditions.

WARNINGS AND IMPORTANT SAFETY RULES

Choose a safe location.

- Always observe local rules and regulations when using this product.
- Never use this product near power lines, telephone poles, trees, bushes, roads, automobiles, or airports.
- Only use this product when you have 100 meters of clear space downwind, and on both sides of your launching position. The power of the kite can pull you downwind unexpectedly and with great force.
- Do not fly your kite over other people or pets. Spectators should remain upwind of you when using this product.
- Never use this product on crowded beaches or fields.
- Never use this product near the water unless you know how to swim and are in good physical health.
- Practice launching and landing procedures, and self rescue techniques before using this product near the water.

Use caution with the flying lines.

- Never touch the flying lines when the kite is in use. Flying lines are extremely dangerous while under tension and can cause serious injury or death.
- Never use this product with worn lines. A line that breaks while under tension can cause serious injury or death.
- Always check your flying lines for knots before each use. Knots greatly reduce the strength of the lines.
- Stay away from tangled flying lines unless the kite is secured to the ground. An unsecured kite can self launch unexpectedly, and can cause serious injury or death.
- Never allow yourself, or anyone else, to get between the control bar and the kite when using this product(s).

CAUTION!

Please note, that you should check the bar, and maintenance it at least after every 250 hours of use, or after six months.

This is in order to check if the lines are still in good condition and if all the parts of the bar are subject to wear and need to be serviced.

The parts to be kept in observation and that need to be checked are:

- The 23m spectra white lines, which should always be washed with fresh water after usage. It should be free of abrasions or lacerations that can occur after collisions or because of sharp rocky surroundings for example. Please note that in case of any abnormality, it is recommended to replace them.
- The Spectra grey depowercord is difficult to break, even though it is subject to wear due to the continuous work to power and depower the kite, it is recommended to replace it after at least 600 hours of sailing or 2 after years.
- Check the condition of the black double chamber tube, this part is very important because it prevents wear of the 4mm spectra safety line that is connected to the kite.
- All the parts of the Chicken Loop must always be washed after each usage, and it is advisable to regularly check if it opens easily, in order to check and have the know-how about the actual functionality

Only after close examination of the bar you can face another kite session safely.

GLOBAL BAR FEATURES

The Global Bar is ready to use. See the diagram for its components and parts.

Chicken loop safety release system with oversized handle and increased sliding potential of all components to secure an effective functionality over the years which is approved according to the french norm.

This is the safety release system in the market with the least amount of steel components, meaning longer lifetime and less maintenance.

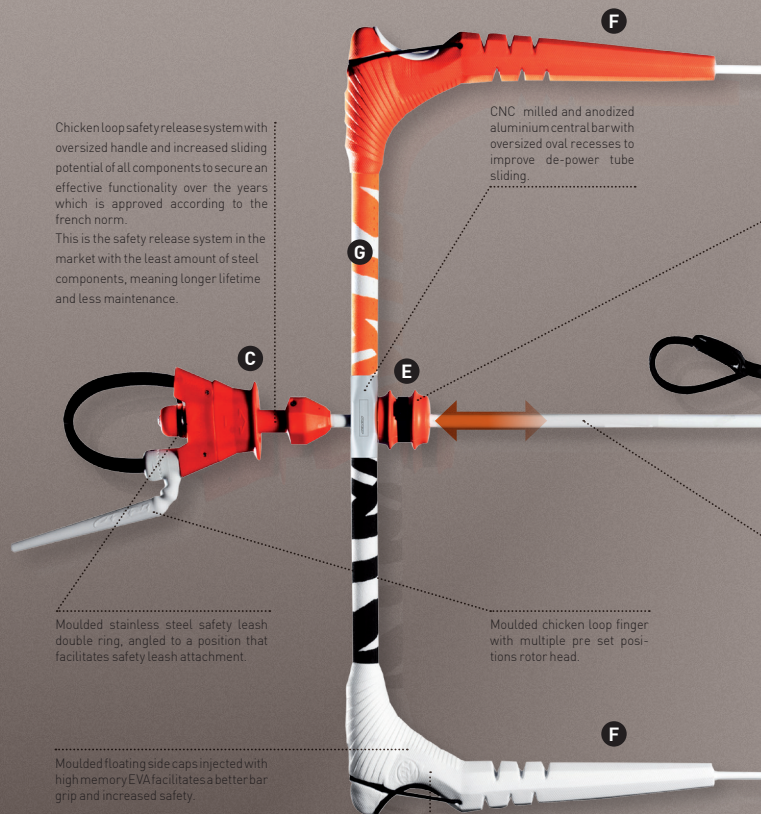
CNC milled and anodized aluminium central bar with oversized oval recesses to improve de-power tube sliding.

Moulded stainless steel safety leash double ring, angled to a position that facilitates safety leash attachment.

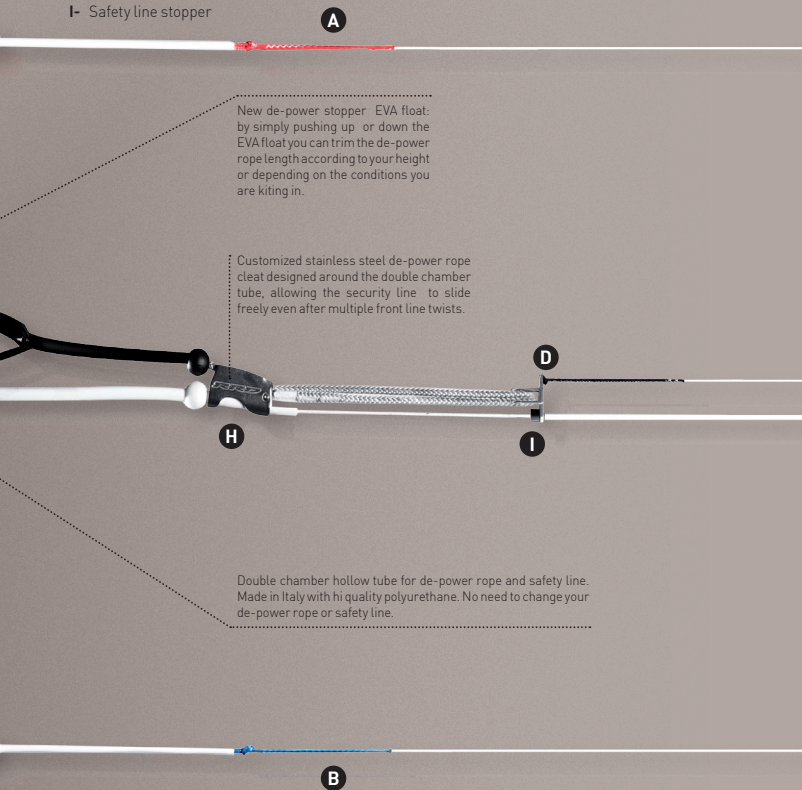
Moulded chicken loop finger with multiple pre set positions rotor head.

Moulded floating side caps injected with high memory EVA facilitates a better bar grip and increased safety.

Oversized color coded side floaters guarantee the floatation of the bar and easy rolling of the flying lines and their locking system.



- A** - Left red back line
- B** - Right blue back line
- C** - Chicken loop safety release system
- D** - Pulley
- E** - De-power stopper
- F** - Side floaters
- G** - Alu tube 20mm
- H** - Power trim with clam cleat
- I** - Safety line stopper



WIND CONVERSION TABLE

BFT	M/S	KM/H	MPH	KNOTS	DESIGNATION
0	0-0,2	0-0,8	0-0,6	0-0,5	Calm
1	0,3-1,5	0,9-5,5	0,7-3,5	0,6-3,0	Light air
2	1,6-3,3	5,6-12,1	3,6-7,5	3,1-6,5	Light breeze
3	3,4-5,4	12,2-19,6	7,6-12,2	6,6-10,5	Gentle breeze
4	5,5-7,9	19,7-28,5	12,3-17,8	10,6-15,5	Moderate breeze
5	8,0-10,7	28,6-38,8	17,9-24	15,6-20,9	Fresh breeze
6	10,8-13,8	38,9-49,8	24,1-31	21,0-26,9	Strong breeze
7	13,9-17,1	49,9-61,7	31,1-38,3	27,0-33,3	Near gale
8	17,2-20,7	61,8-74,6	38,4-46,4	33,4-40,3	Gale
9	20,8-24,4	74,7-88,0	46,5-54,7	40,4-47,5	Strong gale
10	24,5-28,4	88,1-102,0	54,8-63,6	47,6-55,3	Storm
11	28,5-32,6	102,1-117,0	63,7-73,0	55,4-63,4	Violent storm
12	+32,7	+117,1	+73,1	+63,5	Hurricane

GLOBAL BAR

The Global Bar Bar is ready to be used as it comes from the bag with your new kite. The bar is equipped with the new "Rigid Thread" flying lines, specifically developed in order to limit as much as possible their possible stretching.

ASSEMBLING THE GLOBAL BAR

Preparation:

- Unroll the lines upwind from the kite;
- Place the orange side of the bar on the left side when you are looking down wind towards the kite;
- Make sure the lines are straight and not twisted, knotted or tangled in any way.

ATTACHING YOUR LINES TO THE BRIDLE

- Move the steering lines outside of the kite and attach the red and blue steering lines to the back line bridle attachments using the larks head;
- Attach the front lines to the front line bridle attachments using the larks head on the front lines. Make sure to keep the left and right front line on the correct side, without any twists. Make sure that all bridle lines are clear and free of tangles. Make sure there are no knots in any of the flying or bridle lines.

ATTENTION:

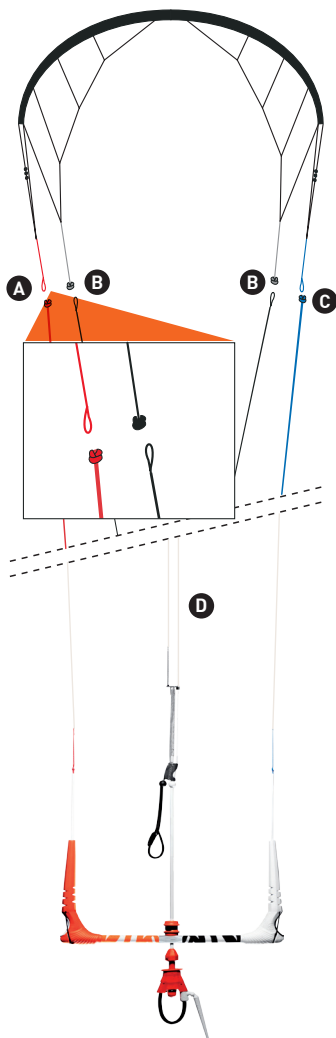
Make sure the pulleys of the bridle system are turning freely.

A - Left red Steering line

B - Front line attachment points

C - Right blue Steering line

D - Grey leader line



SPECIAL FEATURES ON THE GLOBAL BAR V8

We have taken out any unnecessary items instead of adding them, to make every component more functional. Simply said: ***"you cannot break what does not exist"***.

ADJUST THE DEPOWER ROPE LENGTH WITH THE EVA FLOAT

- Our de-power rope is longer in comparison with most other depower ropes, to increase de-power ability.

A longer de-power helps increasing the range of the kite (because of this you won't need to adjust the power through using the depower cord that much while you are kiting). It will also give you more maneuver margin when you are riding waves or if you have long arms.

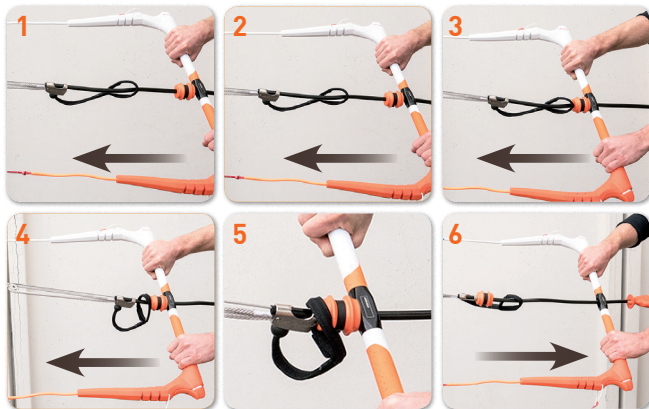
- The length can be adjusted with the new de-power stopper EVA float: by simply pushing up or down the orange EVA float you can trim the de-power rope length according to your height and length of your arms or depending on the conditions you are kiting in.

This stopperball is a handy feature for example for people with shorter arms or for specific tricks like the dead-man or to simply relax your arms while kiting. It makes the kite more stable in light wind, which is useful for schools.

In case you are sure you won't need this feature, you can simply cut the EVA float off. (At own risk).

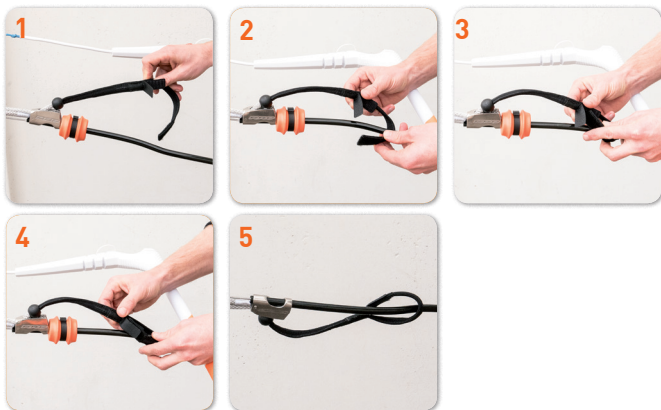
IMPORTANT

The sliding stopper should only be used in safe kiting conditions, since it reduces the kite's depower abilities. You must set the stopper to the maximum distance from your body before you return to the beach!



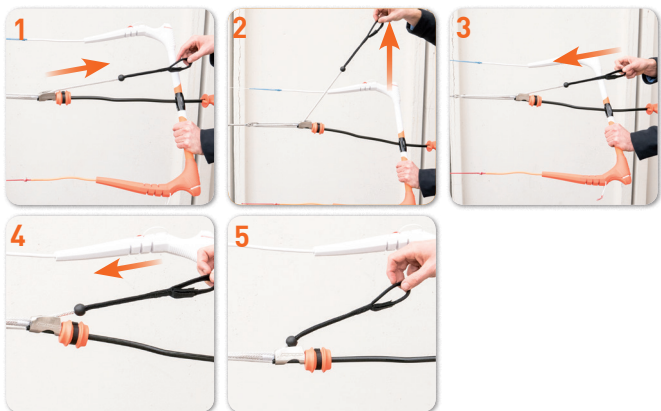
VELCRO LOOP TO PREVENT DE-POWER CORD FROM “FLAPPING” AROUND

You have the option to use the Velcro loop on the de-powercord to prevent the cord from flapping around or getting tangled, this is especially handy when the kite is fully depowered.



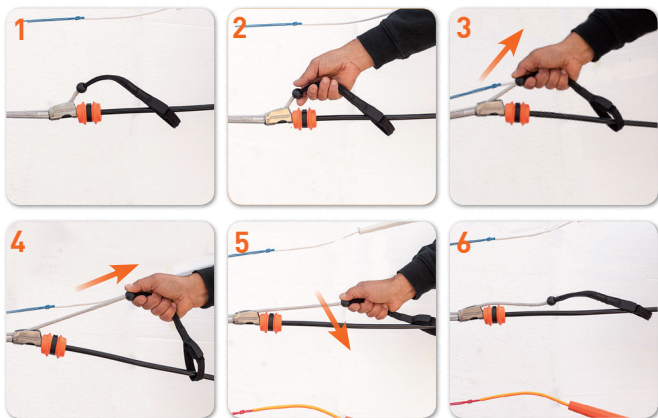
ADJUSTING THE POWER OF YOUR KITE WITH THE CLAM CLEAT WITH OPEN VELCRO LOOP

Pulling on the black handle will shorten your front lines and the kite will have less power. First pull it a short distance towards you to release it from the cleat, move the adjuster away from the cleat at the same time and let the line slide to adjust to the desired power. Let go of the adjuster and the line will be locked between the teeth of the cleat. Releasing the black handle will give you more power.



ADJUSTING THE POWER OF YOUR KITE WITH THE CLAM CLEAT WITH CLOSED VELCRO LOOP

The same procedure of power /de-power you kite can be used with the CLOSED velcro loop around the de-power cord. Since this operation will be slightly more difficult than when having an open velcro loop outside the de power cord, we recommend to get familiar with this option and practice de-power release before going in the water.



HOW TO LOCK THE CHICKEN LOOP INTO YOUR HARNESS HOOK

The chicken loop is designed with a new moulded multiple pre-set positions rotor head chicken loop finger to help you stay locked into your quick release.

Before you hook in and connect the finger to your harness hook: make sure that your safety release is attached and that your lines are set up properly without any tangles or twists.

Preparation:

- 1)** First hook into the loop;
- 2)** Next, push the finger into the center of the harness hook;
- 3)** Make sure that it is below the trim loop and that the Chicken Finger gets all the way in and is straight.

If you don't use the chicken loop finger, simply rotate the finger to the external positions. (Only for experts that want to unhook for advanced freestyle tricks and wave riding [see picture underneath]).



RELEASE OF POWER

The new one-line safety system makes the kite de-power 100% in case you need it. You connect the kite leash to only one line, which makes the kite loose all its power. On top of the power lines we specify which line you can choose that makes the kite go to the left or right when you pull your safety. Because of this option, you can choose what is the safest setting for you, depending on your surroundings.

If the wind picks up dramatically the first thing you should do is push your bar far from your body. If it isn't enough pull the small black velcro loop on the clam cleat achieving more depower. If you need to release the power fully from your kite, pull the orange quick release on the Chicken loop.

Remember to always connect the safety leash to prevent losing the kite, which can create dangerous situations as well. The safety leash will keep you attached to your kite after releasing, and the kite should have no power. In case the kite is still powered up after releasing the quick release (can happen when for example the kite flies into another moving object like another kite or boat), then also release your safety leash which will make the kite be de-attached from you and fully lose all its power. (With the risk of damaging or losing the kite or creating dangerous situations for others).

Remember: you should know how all of your safety releases work, make sure to keep them in good working order, and practice the use of them out of the water by testing them.

QUICK RELEASE SAFETY SYSTEM

Quick Release Trim Loop:

Grab the orange quick release trim Loop and force it up away from your body [photo].

IMPORTANT:

It is your responsibility to maintain the proper working order of the quick release mechanism. Always inspect this piece prior to launching your kite. Make sure the trigger mechanism is properly seated before you ride, and occasionally check it while on the water.

There are two ways to do this:

- 1) Grasp the handle and pull it towards your body;
- 2) Briefly unhook from the loop, and then hook back in.

NOTE:

You must test your Quick Releases before every session in order to get used to the way they work. This is the only way for you to be able to use them fast enough in case of emergency. Remember that the Quick Release devices have a limited lifetime and you must change them after 250 hours of kiting. Our Quick Releases are developed and designed to be used by a rider of minimum 35 Kgs, maximum 120 kgs.



REASSEMBLING THE CHICKEN LOOP

Follow the steps described in these pictures. Keep in mind that you only reassemble your chicken loop again when the kite is secured, so it can't suddenly power up again.



SAFETY LEASH

The safety leash must be tied to the 'ring' on your harness on the one side and one the 'ring' on your chicken loop on the other side before you launch the kite. Always remember that your safety leash is the last connection between you and your kite.

SAFETY LEASH CONFIGURATIONS

You can set up the leash attachment according to your ability and style in two different settings:

1) By attaching the Safety Leash to the "safety release system", when you release you will achieve a total power loss of 100% (RRD recommends only using this mode).

2) "Suicide mode" By attaching the leash both on the ring and the black chicken loop tube.

In this case, when kiting un-hooked, if you let go the bar you will have a 50% de-power of the kite.

In case of opening the safety system you will have a 100% de-power of the kite.

Our V8 bar is standard **equipped with a short leash** (approx. 50cm) to attach on the front of your harness.

***Optional:** thicker and longer freestyle leash specifically for the handle passing riders.



FREESTYLE LEASH ATTACHMENT



STANDARD LEASH ATTACHMENT



ATTENTION:

RRD doesn't recommend using the suicide mode at any time. It may only be used by very experienced riders that should be aware of the consequences and bear responsibility for all resulting damages! Note: if you let go of the bar after an unhooked maneuver, it will be difficult to release the safety system on your chicken loop.

1

Recommended



2

"Suicide mode"



RELEASING THE SAFETY LEASH

Always remember that your safety leash is the last connection between you and your kite. Only release it in case of extreme emergency and remember that an uncontrolled kite is a great danger for other individuals on land and on the water.

If your kite keeps pulling you for any reason after releasing your safety on the chicken loop, you can release yourself from your leash with the quick release at the bottom of the leash.

Follow the steps described in these pictures.



REASSEMBLING THE SAFETY LEASH

Follow the steps described in these pictures. Keep in mind that you only reassemble your safety leash again when the kite is secured, so it can't suddenly power up again.



The RRD logo is displayed in a stylized, italicized font within a black rectangular box.

UN-TWISTING POWER LINES

To untwist the power lines while flying the kite, you can just spin the rotating orange part on top of your chicken loop in the opposite direction (see pic).





CORRECT WAY TO STORE THE GLOBAL BAR

Wrap the flying lines leaving the black plastic de-power rope straight **making** sure not to wrap it around the bar.

CORRECT STORAGE



INCORRECT STORAGE



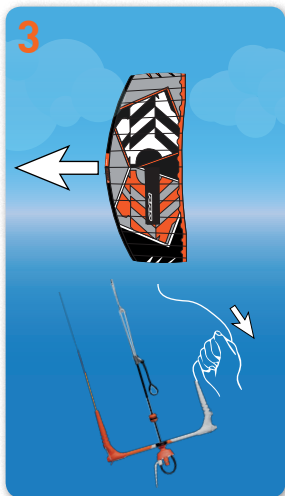
RELAUNCHING THE KITE

If the kite is straight downwind of you, with the leading edge on the water, you can simply pull on one of the back leader lines to relaunch the kite.

As you pull the leader line in, the kite will roll on its side and work its way to the edge of the window.

From there it will relaunch easily.

Make sure that you never wrap the line around your hand. Be careful not to become entangled in any slack line.



TIP: STEPS TO CHECK THE FLYING LINES ALIGNMENT

The flying lines should not or hardly stretch with the exclusive RRD Rigid Thread lines, but follow these steps in the rare case that they did stretch a bit:

1) Unroll your kite lines from the bar and lay your bar down;

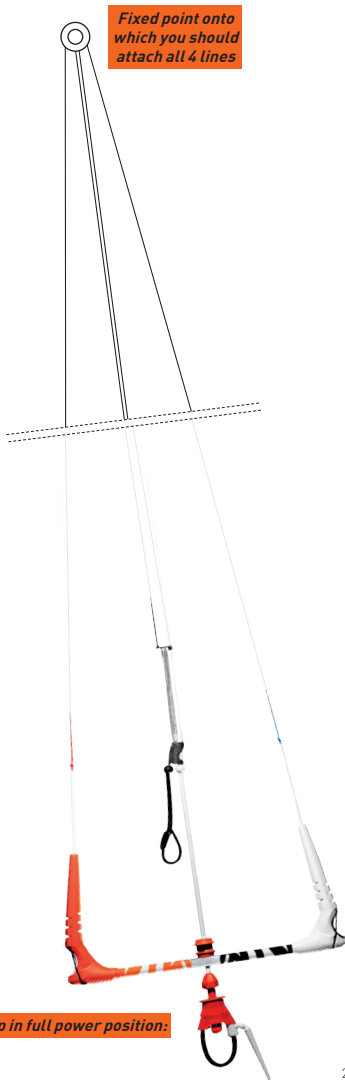
From the bar, walk down the lines and remove any twists starting with your outside lines;

2) Connect the line ends to a rope or something strong that won't move under heavy pressure;

3) Grab the bar, release the de-power cleat to maximum power.

The line lengths have to be the same for all 4 lines.

4) Adjust your line length if this isn't the case.



WARRANTY

Ricci International Srl warrants this product to be free of major defects in material or workmanship to the original purchaser, for a period of twelve (12) months (24 EU) from the date of purchase.

This warranty is subject to the following limitations.

The warranty is valid only if you keep the sales invoice or ticket showing clearly the date of purchase.

The warranty is valid only when the product is used for kiteboarding on water, and does not cover products used in rental or teaching operations.

Ricci International Srl will make the final warranty determination.

Ricci International Srl demand the following information to process the warranty request:

- ***Photo of the damaged area.***
- ***Copy of the selling invoice or ticket.***

Please provide the above information to your dealer who will forward it to Ricci International or fill in this form online

Products can be returned only if a return authorization number (RA) is given by the Ricci International Srl Distributor in advance. The RA number must be clearly labeled on the outside of the package, or will be refused.

If a product is deemed to be defective by Ricci International Srl, the warranty covers the repair or replacement of the defective product only. Ricci International

Srl will not be responsible for any costs, losses, or damages incurred as a result of loss of use of this product.

This warranty does not cover damage caused by misuse, abuse, neglect or normal wear and tear including, but not limited to, punctures, rigging with other than Ricci International Srl components, damage due to excessive sun exposure, or damage due to over inflation of the bladders, damage caused by improper handling and storage, damage caused by use in waves or shore break, and damage caused by anything other than defects in material and workmanship.

This warranty is voided if any unauthorized repair, change or modification has been made to any part of the equipment. The warranty for any repaired or replaced equipment is good from the date of original purchase only. The original purchase receipt must accompany all warranty claims. The name of the retailer and date of purchase must be clear and legible. There are no warranties, which extend beyond the warranty specified here in.

WARRANTY CLAIMS

Warranty claims must be processed and be issued a return authorization prior to shipping to RRD International Srl.

Please call or write for claims processing to the national Ricci International Srl distributor or and than forward to Ricci International Srl.

WARRANTY LINK

Scan this:



or go to:

www.robertoriccidesigns.com/equipment/warranty/



THE RRD “RIGID THREAD LINES”

No need to ‘change any game’ while bringing out our 8th version of the RRD Global Bar with a great history of performance; we stick to all the great features of simplicity and reliability of the previous versions and go a step forward with new components and redesigned parts.

We keep out any unnecessary items instead of adding them, to make every component more functional. Simply said : “you cannot break what does not exist”.

But what we definitely didn’t want and/or need to change are the lines.

In addition to the new systems, the ‘RRD Global Bar V7’ is still equipped with special lines called **“RIGID THREAD LINES”**. These are used exclusively on the RRD bars with great success for over 6 years. A product that’s now widely tested around the world, but there is little known about the details by kiteboarders.

All our lines are produced and developed in Italy, with a worldwide patent granted only to RRD.

The “Rigid Thread Lines” are the result of the collaboration with an Italian manufacturing company that has more than fifty years of experience in the processing of textile fibers, using the most recent and innovative exotic fibers, combined with an intimate knowledge of the physical and mechanical properties of Dyneema.

WHY ARE THE “RIGID THREAD LINES” DIFFERENT?

The differences with our lines is that conventional Dyneema kite line has excellent characteristics of load as well, but suffers from the high temperatures that the horizontal and vertical pull both create, which will make the lifespan of the lines significantly shorter because of wear and tear, while our lines don’t have this problem and have a better resistance to friction. It is also much easier to get knots and/or ‘spaghetti’ in standard kite lines while the ‘Rigid Thread Lines’ are easier to untwist. Last, but not least: the ‘Rigid Thread Lines’ have a great structural memory after tension, so they won’t stretch!

This all derives from its molecular structure as well as the gel spinning process, combined with the production process of the fiber.

During the development of the “Rigid Thread Lines” we have plotted a new path to take full advantage of the properties of this fiber. The result is a product composed of a soul parallel (unidirectional) and tensioned resin, covered with extremely compacted Dyneema braided fibers.

Imagine by comparison the “Rigid Thread Lines” like a widely used electric cable. Core copper wires are covered with a plastic protection sock. In the ‘Rigid Thread Lines’ copper is replaced by unidirectional Dyneema tensioned fibers plus resin, and covered (the plastic part on the electric cable) with a very thin braided sock with a super fine textured Dyneema.

This allows to create an absolutely direct connection between the bar and the kite, since what connects them is uninterrupted, without having any braided structural fibers, which is a classic solution found on all other lines existing on the market.

The “pop-effect” is drastically increased when you use “Rigid Thread Lines”, considerably improving the performance of the kite during wakestyle manoeuvres.

The “Rigid Thread Lines” of RRD Kites will never be subject to adjustment, since they won’t even stretch

under stress-related moves, for example by extreme loops or other radical manoeuvres, and consequently it is impossible to end up with stretched lines and/or of a different length and therefore the trim of the kite remains unchanged through the years.

The "Rigid Thread Lines" will always be visually, technically and feeling compact and rigid throughout the course of their lives, maintaining all its physical and technical characteristics unaltered over the time.

The standard braided kite line has more stretch, which results in different line lengths, power absorption and reduction of performance, especially at the moment where you change the direction of the kite, where the load of the lines reaches its peaks.

Another weakness of the standard braided line that 'Rigid Thread Lines' have turned into a strength are unchanged compactness of the line.

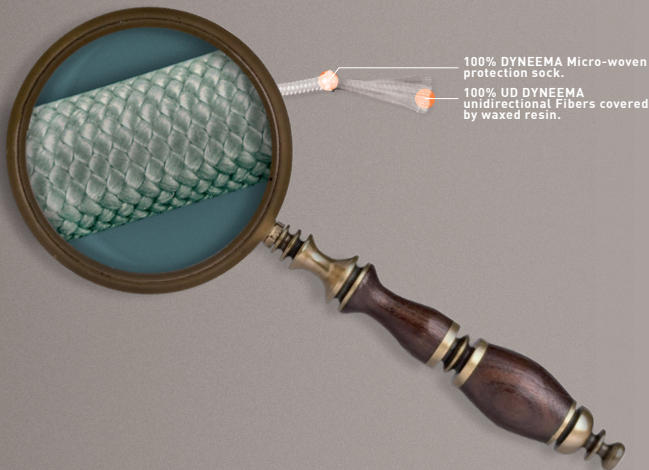
Any new conventional line, has a rigid and compact character because of the resin (generally polyurethane-based) that encompasses it. This resin has a very short life and after only a few sessions, the touch of the product is softer.

This translates into a series of annoying consequences such as:

- The softened lines are more subject to unwanted knots.
- The protection of the line is reduced after each session.
- The braid tends to open and it becomes more fragile, allowing the entry of water which will create small salt crystals inside in case you kite in salt water, which can impair the bearing structure of the line.

WHY ARE RRD KITE LINES INNOVATIVE?

Unlike standard braided lines, the unidirectional structure of 'Rigid Thread Lines' provides a fiber memory that is significantly more efficient. A standard braided line under stress combines all 'dynamic elongation' of the fiber and flattening of the braid, whereas the core unidirectional structure uses exclusively the elastic modules of the fiber.






PHOTO: SVETLANA ROMANTSOVA
RIDER: ABEL LAGO

The logo consists of the letters 'RRD' in a stylized, italicized, and outlined font, set against a black rectangular background.

RRD • Roberto Ricci Designs is a registered trademark licensed to:
Ricci International Srl • Italy

www.robertoriccidesigns.com